

COLLATION OF PUBLIC INPUT

CLIMATE ACTION PLAN

ROUND 1 COMMUNITY ENGAGEMENT SESSIONS

February 6th & 15th, 2024



Participation Data

- In-person event: 50 participants
- Online event: 12 participants

Event Summary

The climate action planning project team held two public engagement events to gather input on greenhouse gas emission reduction targets and climate actions for the Village. The first event was held in person at the Masonic Hall. At that event, participants were encouraged to leave comments on poster boards and also join round-table discussions. The second event was an online session that included an overview of the project by the project team and discussion questions for participants.

The following is a collation of the comments received via poster boards, discussions and during the online event.

A. Current and Future Action

1. What does a climate-ready Cumberland mean/look like to you?

Theme	Comment
Wildfire	<ol style="list-style-type: none"> 1. If we are evacuated due to fire, only people certified by BC wildfire service can stay to fight. Hold BC wildfire service training for community members. 2. Fire prepared for hot/dry forests 3. Fire break on the perimeter of the community forests at the interface with logged-unlogged forestry company land 4. Wildfire breaks throughout forest at lower elevations 5. Fire smart/proof 6. Educate Cumberland to fight forest fires
Governance	<ol style="list-style-type: none"> 1. Community – leave no one behind 2. Building neighbourhood connections and creating emergency plans
Parks & Environment	<ol style="list-style-type: none"> 3. Increase urban tree canopy 4. Rainwater catchment on as many houses as possible 5. More trees 6. Street trees (with irrigation) 7. Green infrastructure to deal with excess water etc. 8. Abundant food gardens 9. Stop logging the watershed. We need the soil, the tree roots, the water capture capacity 10. We love our community forest – make sure it's as resilient as possible to wildfire 11. Intact wetlands and green "infrastructure" 12. Community forest = all forest 13. Rebuild wetlands to catch and store water 14. Rain gardens, bioswales 15. Water security 16. Lots of shade, trees, benches, quiet vehicles, mainly public transportation 17. Clean, smoke free air 18. High bio density forest, clean lake water, water collection storage for micro farming
Land Use	<ol style="list-style-type: none"> 19. Growth boundary of greenspace 20. Walkable, pedestrian friendly 21. Narrower streets, less blacktop 22. Pedestrianized Dunsmuir
Buildings & Energy	<ol style="list-style-type: none"> 23. Sustainable growth and building 24. Infrastructure ready for significant storm events 25. Solar power
Water	<ol style="list-style-type: none"> 26. Water catchment on everyone's yard – BIG BARRELS 27. Water storage
Transportation	<ol style="list-style-type: none"> 28. Fewer personal cars, more car shares, buses, bikes, walking 29. Solar-powered EVs
Other	<ol style="list-style-type: none"> 30. Vote with Village dollar: do not buy from large corporate polluters 31. A happier place 32. Greater sense of community that can sustain itself for our children 33. Being accountable

2. What climate-friendly actions are you already involved in that you feel excited about?

Theme	Comment
Buildings & Energy	<ul style="list-style-type: none"> 34. Solar panels 35. Home energy navigator program 36. Switching to heat pump 37. Working from home 38. Installing solar power 39. Home energy efficiency 40. Building net zero ready home 41. Starting a solar company
Parks & Environment	<ul style="list-style-type: none"> 42. Growing organic food 43. Mason bees 44. Plant more trees 45. Remove lawns 46. Pollinator gardens 47. Supporting CCFS 48. Tree planting 49. Keeping trees alive 50. Building a garden, planting trees that can survive in this environment
Waste	<ul style="list-style-type: none"> 51. Recycle almost everything 52. Reducing consumption 53. Repairing, mending, re-using 54. Buying used goods only
Transportation	<ul style="list-style-type: none"> 55. Trying not to drive 56. EV (70% less emissions for 40% of your footprint = - 28% overall) 57. Drive an EV 58. Biking to work 59. Not flying 60. Carpooling
Governance	61. Social values and sustainability incorporated into Village procurement
Other	<ul style="list-style-type: none"> 62. Eating less meat 63. Buying local food

3. What actions do you want to take?

Theme	Comment
Buildings & Energy	4. Home energy efficiency
Parks & Environment	<ul style="list-style-type: none"> 5. Supporting local forest initiatives 6. Helping purchase more land for CVLT 7. Bee keeping 8. Restoration of all salmon bearing streams 9. Cleaning up air 10. Keep woods healthy 11. Bee keeping 12. When it's hot, keep water for birds and bees 13.
Waste	<ul style="list-style-type: none"> 14. Reduce waste 15. Push for circular economy policies 16. Purchase food with less packaging
Transportation	<ul style="list-style-type: none"> 17. Buying an EV 18. Cycling more
Governance	19.
Other	20. Growing more food on my land

B. Setting Goals & Targets

1. Share your feedback on the proposed targets

- Let's go further than the minimums
- Net zero by 2050! Yes!

2. What concerns or challenges do you foresee?

- Getting the biggest bang for Village bucks
- Technology
- Lack of change in the last 5 years
- Costs for some climate mitigation measures
- Consumerism is hard to slow/stop
- Building codes discourage reuse and adaptation
- Wider governmental policies and inaction
- Too little general understanding in community of realistic, small manageable chunks that can be carried out individually to help reach goals
- We don't talk enough in our communities to spread best practices and assist each other to adapt

3. What additional goals should we aim for?

- Having enough "clean" power (nuclear small-scale?)
- Consider scope 3 emissions – food is a huge contributor
- Ensure the transportation plan gets lots of bike-ability
- Most effective and efficient actions/policies to get to netzero by 2050
- Healthy soil, clean air
- Create and protect space for wildlife and build bio-resiliency
- Be aware of where we put our consumer dollar
- Benches to enable people to walk further (accessibility)
- **Benchmarking, reporting and making goals measurable and tangible**
- Incentives and disincentives
- Incentivize swapping wood stoves for high efficiency wood stoves to reduce smoke particulates in the community air

C. Climate Action Priorities

1. What actions or measures would be effective for reducing emissions and adapting to climate change?

Theme	Comment
Buildings & Energy	<ul style="list-style-type: none"> 21. More multifamily housing 22. Solar power on public facilities (x3) 23. Geothermal 24. House framing with no thermal bridging – staggered-stud walls 25. Small factor nuclear power 26. New development – intentional, livable, resilient, low carbon communities 27. Continued + more programs to support people making energy upgrades to homes 28. No natural gas in new construction 29. Energy efficiency requirements 30. Require new development to be EV ready 31. FireSmart around all homes 32. Cooling centre for heat events 33. Heat pumps 34. Passive cooling of buildings
Transportation	<ul style="list-style-type: none"> 35. Village (corp) vehicles to electric 36. Improved/more frequent shuttle buses into Courtenay 37. Community 'errand' service from/to Courtenay/Comox 38. Active transportation <ul style="list-style-type: none"> a. Bike/multit-use lanes (off-road cycling infrastructure) b. Nicer safer bike lanes to Courtenay c. Promotion of active transportation network d. Alternate transportation programs and supports 39. Car shares <ul style="list-style-type: none"> a. Developer supported car shares b. Car shares in multiresidential c. Coop EV car share 40. No idling policy in town 41. Use one car per family instead of multiple 42. Electric school buses
Land Use	<ul style="list-style-type: none"> 43. Grocery store in town 44. Increased density in old Cumberland and newer areas 45. Zone for more townhouse developments which are the lowest carbon form of development 46. Less sprawl zoning
Waste	<ul style="list-style-type: none"> 47. Landfill <ul style="list-style-type: none"> a. Sustainable gas capture at landfill b. Allow scavenging at landfill c. Methane harvested for fuel from dump 48. Use fee for sani-dump 49. Deconstruction bylaw for Region 50. Re-use water 51. Institutional organics collection – schools don't have it 52. Local industry using trash glass crushed (stepping stone bricks?) under concrete slabs 53. More reusing others throw aways (ex. Free store or donation) 54. Restore old buildings instead of tearing them down and starting from scratch 55. Electric garbage trucks 56. Expand recycling options

Theme	Comment
	57. Grey water
Parks & Environment	<p>58. Forests</p> <ul style="list-style-type: none"> a. Increase urban forest cover b. Managing forests for fire risk (including forest barrier between Cumberland the logging clearcut activities) c. Reduce upland logging d. More trees always e. Stop clear cutting f. Development wildfire management plan g. Trees for shade and water h. Have fallen limbs, dead trees removed from property <p>59. Water</p> <ul style="list-style-type: none"> a. Wetland protection/restoration b. Better watershed protection -> no logging c. Bike wash <ul style="list-style-type: none"> i. Fee and metered d. Water conservation e. Water barrels to capture water off roofs and keep water on our properties for times of drought <p>60. Plant resilience species</p> <p>61. Leveraging natural assets</p> <p>62. No herbicides or pesticides sprayed on lawns (less lawns, more gardens, wild drought tolerant species)</p> <p>63. <i>Eliminate or at least utilize natural emissions</i></p> <p>64. <i>I'd like to see Cumberland go to stage 3 earlier in the dry season so the Village can spill a minimal amount of water in to Perseverance Creek to the refuge pools for wildlife</i></p>
Community & Partnerships	<p>65. Fire</p> <ul style="list-style-type: none"> a. Firesmart training for the community b. Firesmart S100 wildfire training for residents c. S100 training for community members and work with BC wildfire service d. Forest fire protection and barriers, planning <p>66. Circular economy facilitation/promotion</p> <p>67. Neighbourhood emergency planning</p> <p>68. Integrate resilience planning with broader stewardship plans</p> <p>69. CCFS: active transportation connector regional partnership</p> <p>70. CVRD parks -> bike/multi-use trails to Courtenay and the lake</p> <p>71. CCFS</p> <p>72. Help build community to share ideas and assets</p> <p>73. Making sure everyone in the community is aware of an emergency number when spotting fires so they can be attended to as soon as possible</p>
Other Big Ideas	<p>74. Just transition guide = great resource. SacredEarthsolar.com</p> <p>75. Water irrigation system around the Village and in the forest in case of fire</p> <p>76. Adaptation is key: preparing for drought, floods and wildfire. What's our plan to survive the new climate?</p> <p>77. Make the village a more pleasant place to live through things like active transportation, trees, etc</p> <p>78. Start trying to measure and include embodied carbon of goods we buy (most often from outside BC and Canada)</p> <p>79. Build a community of climate leaders</p> <p>80. Cisterns</p> <p>81. Lobby provincial/federal governments for policy/regulatory change</p>

2. How can local businesses and industries be involved in reaching these targets while maintaining economic viability?

- a. Install solar
- b. Adopt regenerative farming practices at all local farms. Get more people into farming, at all scales
- c. Reduce waste
- d. Research impacts in their supply chain
- e. Expand the restore and used goods stores
- f. Tax deductions for climate actions

D. Valued Places

- Sidewalks/walkable + covered stops
 - No emissions
 - Bus network (electric & solar)
 - Affordability (less/no need for car) = inclusive
 - Rethink materials to build sidewalks
- Water supply
 - How do we drought-proof our water supply?
- The Commons, the air we breathe
- Greenspaces
 - Wildland urban interface and increasing fire risk
 - Drought, weather, species change
- Cumberland Lake Park has unique terrain and biomes (e.g. cliffs, arbutus trees)
 - Increased erosion/risk due to droughts, fire
- Cumberland wetlands
 - Wetlands and indicator species susceptible to drought
- Small park with a view
- The Puntledge river
 - Water levels/salmon run
- Young & elderly
 - Most vulnerable to heat and poor air quality

E. Takeaways

The following table includes community suggestions that are covered by existing actions or are flagged as new actions.

Sector	Community Suggestion	Relevant Action	Notes
Parks and Environment	Increase urban tree canopy with more trees	Partial – Update development policy and bylaws to require green infrastructure, and permeable areas where possible. Including requirement climate-resilient plantings such as street trees.	Plant resilient species
	More green infrastructure, especially to deal with excess water	Increase and/or enhance green infrastructure and nature-based climate solutions at Village properties.	Will deliver multiple co-benefits; plant resilient species
	Wetland protection and restoration (including no logging)	Partial – Increase, enhance, and protect nature-based solutions at Village properties	
	Fee for bike wash	New Action	
	No herbicides or pesticides on lawns	New Action	
	Water storage barrels in everyone's yard / rainwater catchment	New Action	
	Pollinator gardens	Partner with land owners and stewards to undertake stewardship initiatives to support health and connectivity of natural systems.	Community gardens, pollinator gardens (collaborative)
Governance	Create neighbourhood emergency plans	Partial – Collaborate with local partners and other municipalities through networks focused on green communities, food security, water security, emergency preparedness, to facilitate resource-sharing, pooling funding, and collaboration on climate resilience and mitigation projects; and Support community-wide activities and programs that facilitate social connection, information sharing, climate awareness, and climate response activities amongst City residents at the neighborhood scale.	
	Manage forests for fire risk (including wildfire management plan)	New Action	
	Social values and sustainability incorporated into Village Procurement	Review Sustainable Procurement policy to include climate change mitigation and adaptation.	
	Integrate resilience planning with broader stewardship plans	Partner with land owners and stewards to undertake stewardship initiatives to support health and connectivity of natural systems.	Include resilience specific language
	Cooling centre for heat events	Work with Region and Island Health on extreme heat response measures	
Community Health and Wellbeing	Wildfire service training for community members / FireSmart S100 wildfire training	New Action	Increasing community resilience

Sector	Community Suggestion	Relevant Action	Notes
Buildings & Energy	Solar power on public facilities	<i>Assess opportunities for solar panels on Village facilities or properties.</i>	
	Energy efficiency requirements	<i>Adopt and implement the Zero Carbon Step Code Emissions Level 4 (EL-4) by the end of 2024.</i>	Includes BC Energy Step Code energy efficiency requirements
	Continued and additional programs to support home energy upgrades	<i>Collaborate with CVRD and local partners to educate the community about improving energy efficiency and resilience and providing access to resources and financing options.</i>	Home energy navigator program
	No new natural gas connections	<i>Prohibit or limit new fossil fuel gas connections (via accelerated adoption of Zero Carbon Step Code EL-4 or by implementing a DPA on a separate timeline).</i>	
	New development guidelines	Multiple	Including no natural gas in new construction, intentional, livable, resilient, and low carbon communities, EV-ready
	Geothermal	<i>Work with the Regional District and neighboring communities, First Nations, the Province, and utilities to explore and incentivize local renewable energy production (such as solar, geothermal).</i>	
	FireSmart requirements	<i>Require infrastructure and buildings be designed to future projected conditions in alignment with expected lifespan of asset and relevant variables.</i>	Specifics: Strengthen FireSmart requirements for DPA4 – Wildfire Interface in the OCP
	Infrastructure ready for significant storm events	<i>Require infrastructure and buildings be designed to future projected conditions in alignment with expected lifespan of asset and relevant variables.</i>	
	More multifamily housing	Partial – <i>Encourage infill projects that increase mixed use development, housing density, access to active transportation infrastructure and transit.</i>	
Land Use	Increase density	<i>Encourage infill projects that increase mixed use development, housing density, access to active transportation infrastructure and transit.</i>	
	Pedestrianized Dunsmuir Zone for more townhouse developments	New Action New Action	
Transportation	Electrification of Village (corporation) vehicles	<i>Develop and implement a Green Fleet Strategy that prioritizes zero-emissions fleet vehicles and/or renewable transportation fuels, reduces overall vehicle use, and reduces emissions from tools and equipment.</i>	
	Promote active transportation including bike/multi-use lanes (off-road cycling infrastructure)	Multiple – for example, <i>Encourage lower carbon transportation such as carshare, biking, e-bikes and e-scooters, and encourage alternative</i>	

Sector	Community Suggestion	Relevant Action	Notes
		<i>transportation links within Comox Valley and regionally.</i>	
	Requirements for new builds to be EV ready	<i>Update charging requirements to mandate Level 2 capable connection for all new home builds, increase % of parking with charging in larger developments, ensure electrical capacity is sufficient in MURBs for all spaces to have level 2 charging eventually.</i>	
	No idling policy in the Village	New Action	
	Improved/increase public transportation connections with Courtenay	<i>Partial – Promote the use of CVRD public transit such as by providing transit passes at discounted rates or free for employees and vulnerable populations. Provide free transit to community events.</i>	
	Electric school buses	New Action	
	No idling policy in the Village	New Action	
Waste	Gas capture at the landfill	<i>Partner with CVRD Landfill to support waste reduction initiatives, waste-to-energy opportunities, and to measure and report on waste diversion.</i>	
	Use fee for sani-dump	New Action	
	Deconstruction bylaw	<i>Encourage/require deconstruction techniques rather than demolition for new builds.</i>	
	Institutional organics collection	<i>Partial – Deliver food waste reduction campaigns, continue to promote Cumberland's organics collection, and support food recovery programs that redistribute food to people in need.</i>	
	Reusing others throwaways – for example creating a free store, donations, etc – circular economy facilitation	<i>Promote circular principles such as repair/ recycling/ repurposing used electronics, clothing swaps, etc.</i>	
	Electric garbage trucks	<i>Explore switching to electric garbage trucks (currently being used in Comox and Courtenay).</i>	
	Expand recycling options	<i>Partial – Support regional compost education programs, promote local organics collection, and support Cumberland's Foodshare program.</i>	

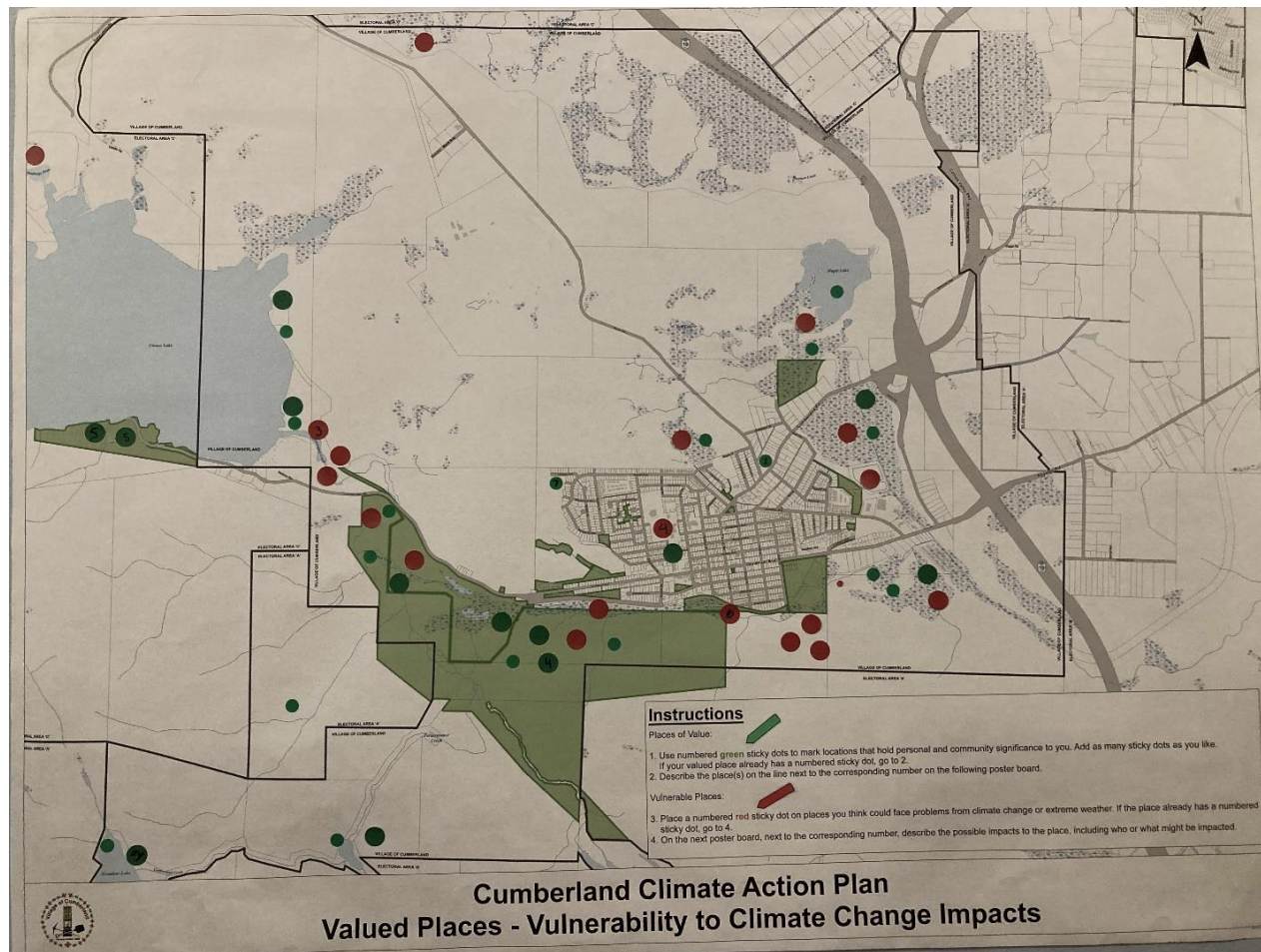
Additional key recommendations:

- Benchmarking, reporting and making goals measurable and tangible
- Community collaboration, best practices, assisting one another
- Benches for accessibility in nature

Notes for the Transportation Master Plan update

- Walkable, pedestrian friendly Village
- Fewer personal cars, more car shares, buses, bikes, walking
- Bike-ability
- Improved/more frequent shuttle buses in Courtenay
- Active transportation (safer bike lanes to Courtenay, bike/multi-use lanes, promotion of active transportation network, alternate transportation programs and supports)
- Car shares (developer supported, in multi-residential, coop EV car share)

Appendix A – Photo Record of Comments on February 6, 2024 Event Poster Boards and Discussion Round Flipchart Notes



VALUED PLACES

Meaning? Climate Impacts?

- ① SIDEWALKS = WALKABLE, (LACK OF) + COVERED STOPS. → NO EMISSIONS
→ AFFORDABILITY (LESS/NO NEED FOR CAR) = INCLUSIVE
- BUS NETWORK (ELECTRIC) → re think → materials to build SIDEWALKS SOLAR

Wildland Urban Interface - ↑ Fire Risk

- ② Water Supply

How do we drought proof our water supply?

All older Buildings - huge embedd carbon, fond memories, and cheaper to refurbish than ~~to~~ rebuild, IF code is applied flexibly

- ⑦ Small park with a view ☺

- ③ the commons
the air we breathe

- ④ Greenspaces

drought / weather / species change

- ⑤ Cumberland Lake Park has unique terrain + biomes - eg. cliffs, arbutus.

Increased erosion/risk due to droughts fire

- ⑥ Cumberland wetlands

Wetlands + indicator species susceptible to drought

Vulnerable places

- ③ Puntledge river → ^{water levels /} salmon run
- ④ Young + Elderly → ^{most} vulnerable to heat
+ poor air quality

Current and Future Action

What does a climate-ready Cumberland mean/look like to you?

Draw or write your answer below

Handwritten notes and drawings include:

- Street trees (with irrigation)
- Abundant food gardens
- Water storage
- Fewer personal cars, more car shares, buses, bikes, walking
- Water catchment on everyone's yard 316 BARRELS
- Green infrastructure to deal w/ excess water etc
- Fire prepared for hot/dry forests
- Community - leave no one behind
- Building neighborhood connections + creating emergency plans
- Fire smart proof
- Sustainable growth building
- Walkable Pedestrian Friendly
- Urban tree canopy
- Infrastructure ready for rain significant storm events
- More Trees!
- Growth boundary of greenspace
- Water catchment on as many houses as possible
- Fire break on the perimeter of the community built at the interface with forest - developed local fire safety company
- Wildfire breaks throughout forest @ lower elevations
- Fire break on the perimeter of the community built at the interface with forest - developed local fire safety company
- Fire smart proof
- Sustainable growth building
- Walkable Pedestrian Friendly
- Urban tree canopy
- Infrastructure ready for rain significant storm events
- More Trees!
- Growth boundary of greenspace
- Water catchment on everyone's yard 316 BARRELS
- Green infrastructure to deal w/ excess water etc
- Water storage
- Fewer personal cars, more car shares, buses, bikes, walking
- Abundant food gardens
- Street trees (with irrigation)

Celebrating Community's Climate Action

What climate-friendly actions are you already involved in that you feel excited about?

Handwritten notes include:

- Solar Panels
- Growing organic food
- MASON BEES
- RECYCLE ALMOST EVERYTHING
- TRY NOT TO DRIVE
- 2-vehicle
- plant more trees
- remove lawns
- breakup law
- Planting trees + pollinator garden
- Question the UN Agenda 2030 and why the UN + WEF are so keen to get local councils to collect + control everything!
- Be wary of who you are collecting the data for. The data is all about controlling behavior through nature + AI
- HOME ENERGY NAVIGATOR PROGRAM
- social values + sustainability incorporated into Village Procurement
- Electric Vehicles
- 70% less emissions for 40% of your footprint = -28% overall
- Climate change is affected by planetary gravitational pull ie Jupiter on Earth + the angle the Earth rotates at.

Targets

40%

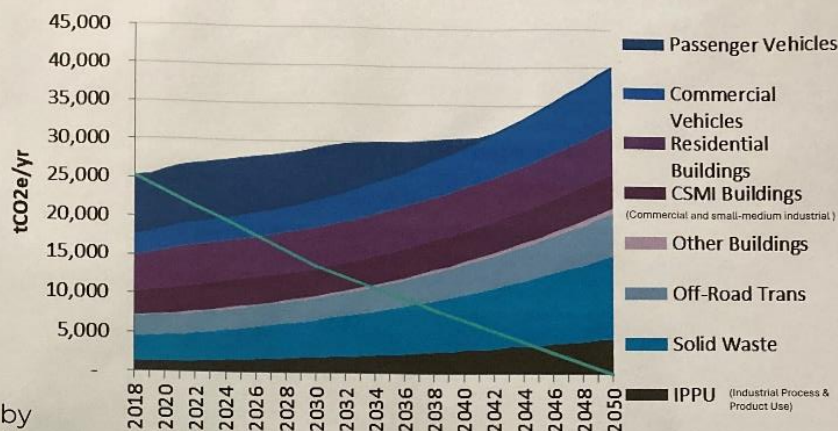
Below 2018 levels by 2030

100%

Below 2018 levels by 2050 - Zero emissions

How to get there?

'Business as Usual' emissions projections by sector, with the blue line showing reductions needed to meet our targets



Questions

Share your feedback on the proposed targets

What concerns or challenges do you foresee?

What additional goals should we aim for?

Question: whether emissions are THE enemy of climate to what change + design

Getting the highest bang for village bucks

Technology

Please look up the research on CO₂ - Some say it's not as conveyed in the mainstream. (we need CO₂)

CONSIDER SCOPE 3 EMISSIONS - Food is a huge contributor

Let's go further than the minimums!

net zero by 2030! Yes!

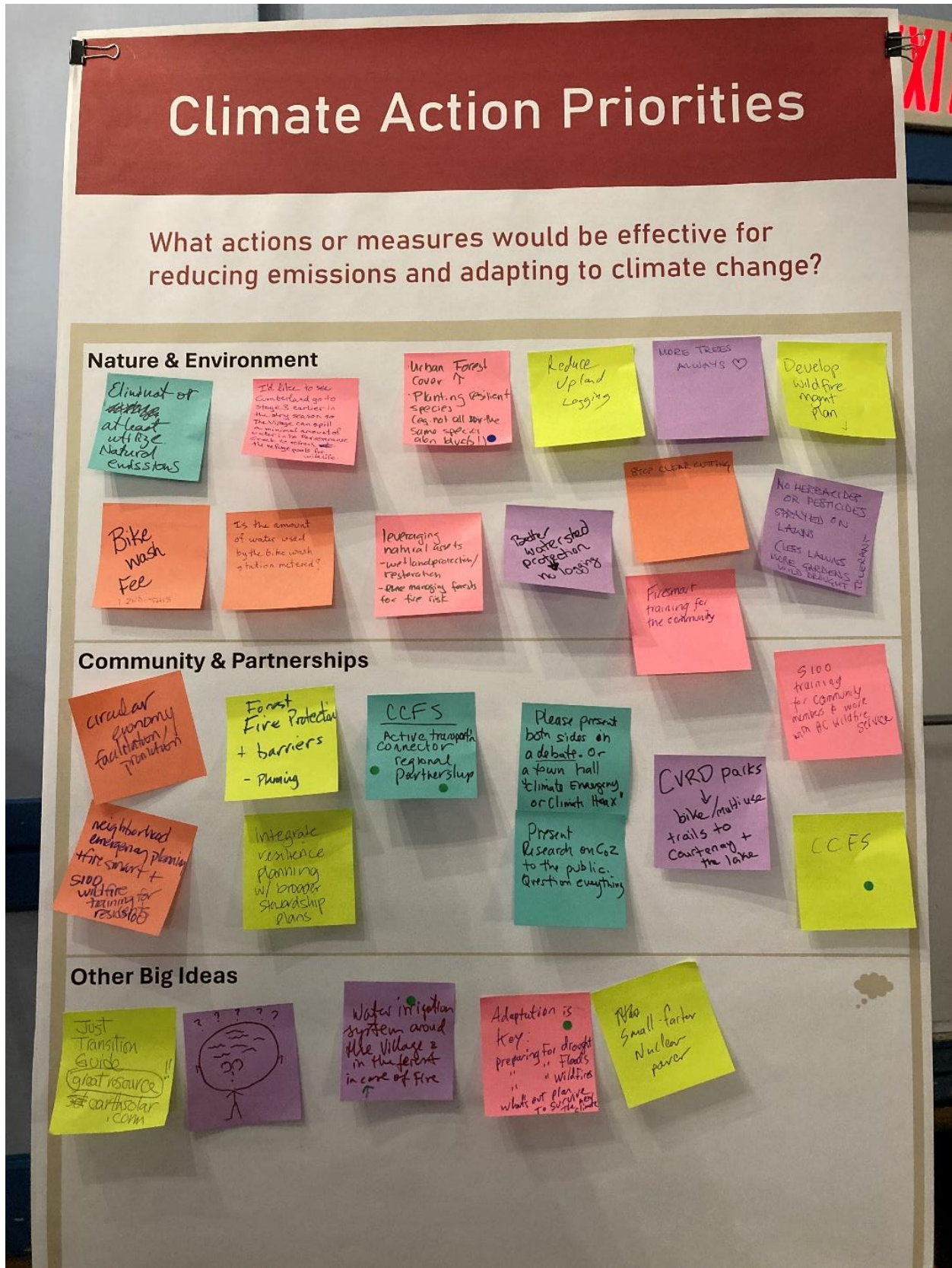
Currently, our temperatures are at their coldest. Please provide 100% of temperature + CO₂ levels

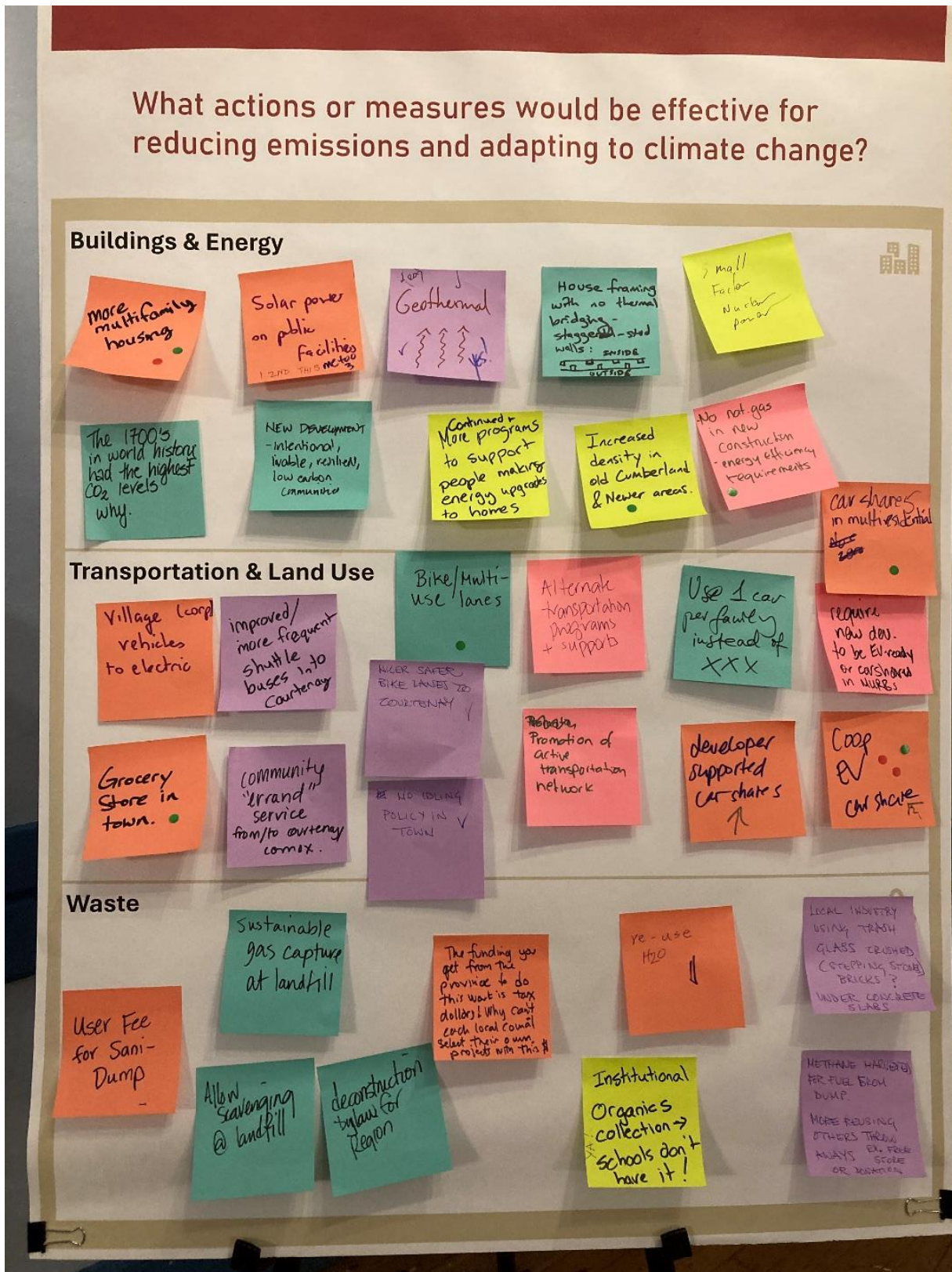
Please show positive correlation + causation of CO₂ affecting temperature.

Having enough "clean" power (Nuclear small-scale?)

Ensure the transportation plan gets lots of bike-ability

I'd like to see the consultants propose the most effective efficient actions/policies to get to net zero by 2050!





ACTIONS & CHALLENGES

• PROTECT OUR WILD SPACES

→ FOCUS ON NATURAL ASSETS

→ wetland preservation

→ preservation of fish species

→ connection to healthy ecosystems

- Don't remove beaver dams

* WATER *

? Is bike wash station metered?

(no) → Level 3 water restrictions → shut down.

↓
- go to level 3 earlier

- don't wash cars at home

- redirect to creek.

↓
DROUGHT

MTB SEASONS
RESTRICTIONS
TO SUPPORT
ECOSYSTEM HEALTH
Soil protection
Peration

• LOGGING VS

NO
CLEARCUTS

CONSIDERATIONS
ETC.

LAND USE

Where matters

PROTECTION OF FORESTED HEADWATERS OF DRINKING WATER SUPPLY

ongoing

→ coordination with Nodac (CCF)
Perseverance Water Initiative

* WILDFIRE & SMOKE *

- forestry management - ecological restoration of existing forest
[density, species, age of stands]

NEW
- Firesmart - community wide plan - individual level

↳ (new construction guidelines have this integrated)

- protect fluvial threshold.

- reduce vulnerability
Awareness
Education

↳ indigenous practices

- Prescribed burns

→ check this into this
(e.g. libet)

Homeowner gardens

FORESTS IN THE VILLAGE

- existing (new) program

↳ species

↳ drought tolerant

↳ fire-proof / resistant

FOOD SECURITY

- home gardening - how to water (aim for efficient practices)
 - efficient, effective
- * education / awareness
- * greywater usage - allowed?

community gardens
or shared gardens

Forest in the Village

- AGING TREE CANOPY
- LESS DENSITY IN NEW DEV.
- INCREASING HEAT ISLAND EFFECT

HEAT

- walking up DUNSMUIR in SUMMER - INTENSE
 - NO SHADE
- New development - no shade (heat pumps inside)
 - ↳ Don't build "heat islands"
 - require planting, deciduous (Firesmart)
 - ↳ Don't remove healthy soils

(there was a
boulevard
of trees
~50 years
ago)

challenge

→ CAPACITY TO APPLY FOR / ACCESS / IMPLEMENT / MANAGE
PROVINCIAL & FEDERAL FUNDING PROGRAMS ←

- No pesticides / herbicides (ecosystem health & biodiversity)

UNINTENDED
CONSEQUENCES

